

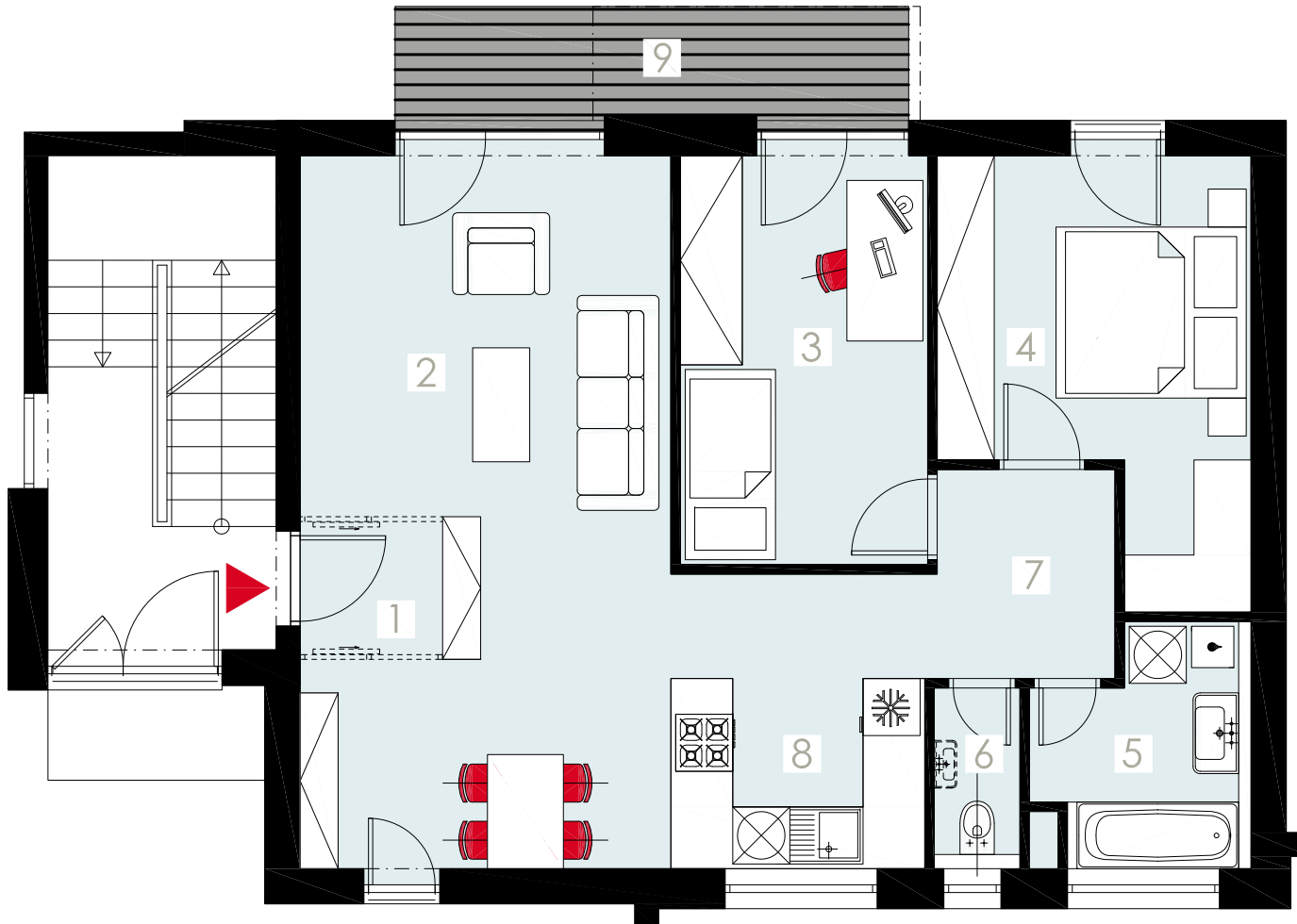


BYT J4N FLAT J4N

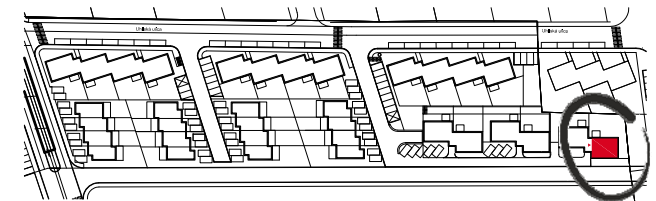
1. VSTUPNÁ PREDSEIŇ / LOBBY	5,46 m ²
2. OBÝVACIA IZBA / LIVING ROOM	19,50 m ²
3. IZBA / ROOM	11,45 m ²
4. IZBA / ROOM	12,85 m ²
5. KÚPEĽŇA / BATHROOM	5,08 m ²
6. WC / TOILET	1,71 m ²
7. CHODBA / CORRIDOR	4,59 m ²
8. KUCHYŇA / KITCHEN	13,08 m ²

CELKOVÁ PLOCHA / TOTAL AREA 73,72 m²

9. Balkón / balcony 6,86 m²



1 2 3 4 5 M 1:75



situácia objekt J / situation building J
schéma pôdorysu 2. podlažia / scheme of second floor